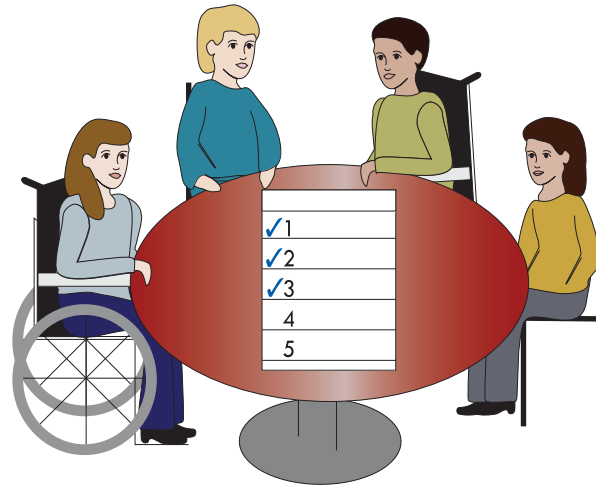


# Boards for All

## Board Development

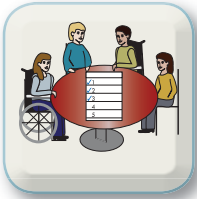


This worksheet provides an opportunity to think about being a member of a board or council.

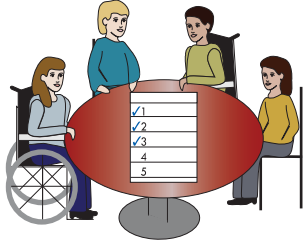
### Instructions

1. Read the information on each page.
2. Complete the questions.
3. Bring the completed worksheet to share at your next meeting.
4. Ask for help, if you have any questions.





# Board Development



## How Does a Board of Directors Grow?

An effective board values diversity and has members with different backgrounds and abilities. A board often identifies skills and community representation it needs, while some boards may be selected and appointed by other authorities. Members can use their own professional networks and community connections to recruit board candidates.

Staying updated about public policies and funding helps a board plan successfully for the future. Many boards have annual planning sessions to energize members, facilitate teamwork and create action plans.

### Please Complete

*How can a board expand its representation and increase effectiveness?*

Expand representation

---

---

Increase effectiveness

---

---



# Board Development



## Is a Board Meeting Community Needs?

An evaluation and follow-up action plan gives a board the opportunity to address improvements needed to govern effectively.

Surveys are tools members or the board as a whole can use to examine their knowledge and duties. Results help a board consider how to improve its effectiveness and establish outcomes to accomplish. Surveys may also assist the chairperson identify any trainings that may be helpful.

### Please Complete

*What training would help board members be successful in their roles?*

---

---

---

*What training would help you be more effective?*

---

---

---